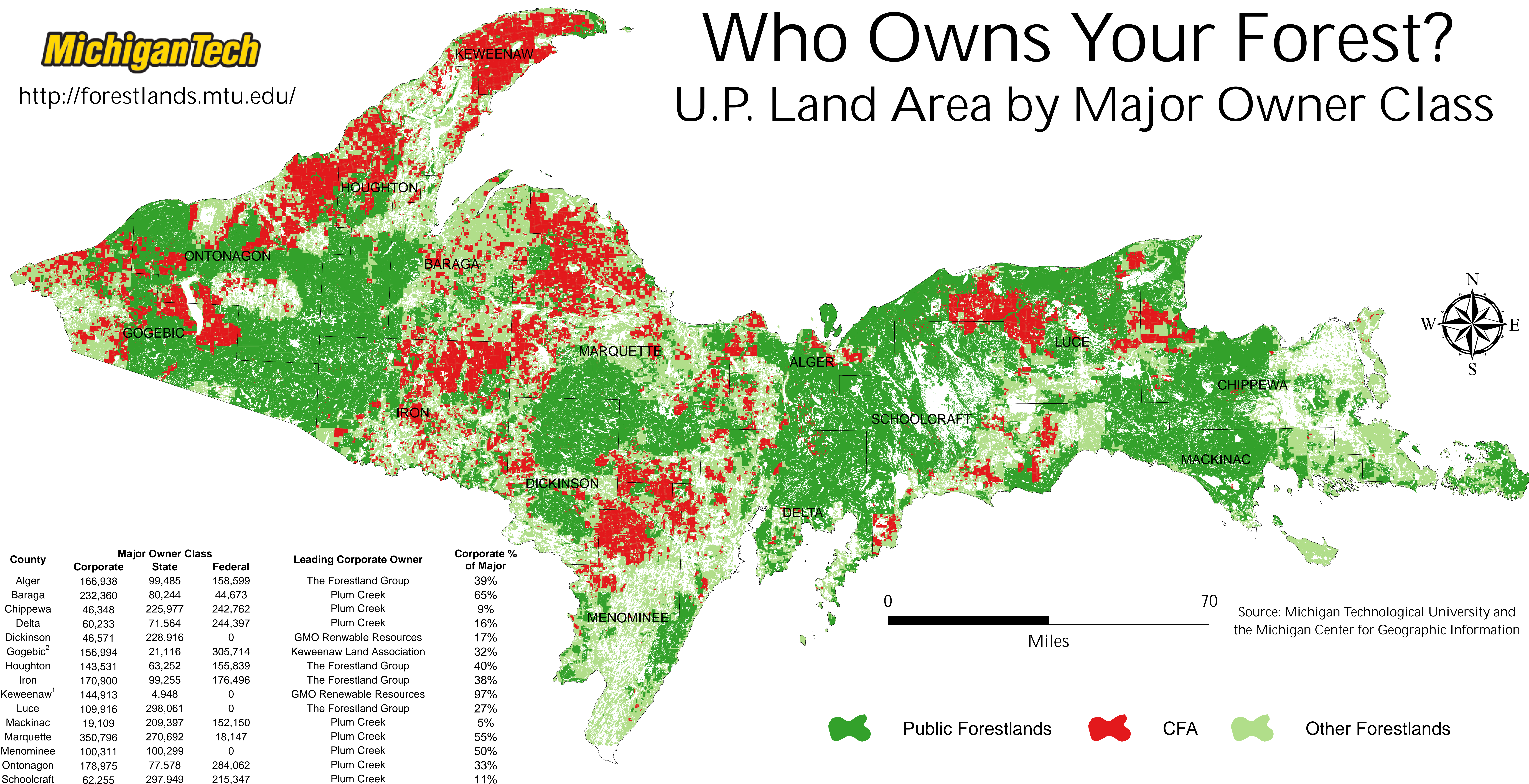


Who Owns Your Forest?

U.P. Land Area by Major Owner Class



¹Keweenaw County areas exclude Isle Royale.

²Gogebic County also has 50,290 acres of county forest in public ownership.

Source: Michigan Technological University and the Michigan Center for Geographic Information

This map shows the distribution of forestland across Michigan's Upper Peninsula by major owner class. The effective date of the underlying data varies by county, ranging from 2002-2006. Therefore, while this figure is indicative of general trends, it does not precisely represent the current pattern.

Forested areas make up the majority of land cover in the U.P., representing 79% of the total land base. About half of all forestland in the U.P., covering 4.2 million acres, is in public ownership. The remaining half is owned by a mixture of entities such as private individuals, corporations, various organizations including conservation groups and local governments.